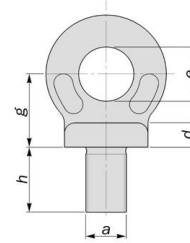
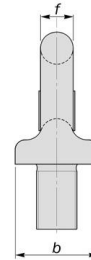


BS 4278 Collared Eyebolts



BS 4278 Collared Eyebolts							
Thread	b	d	e	f	g	h	SWL Tonnes
M8	22	7	15	9	20	18	0.15
M10	22	7	15	9	20	18	0.25
M12	22	7	15	9	20	18	0.32
M14	29	10	20	12	26	23	0.50
M16	29	10	20	12	26	23	0.63
M18	36	12	24	14	32	28	1.00
M20	40	14	27	16	36	32	1.25
M22	45	15	30	18	40	35	1.60
M24	52	17	35	21	46	40	2.00
M27	58	20	39	23	52	46	2.50
M30	65	22	44	26	58	51	3.20
M33	72	24	48	29	64	56	4.00
M36	81	27	54	32	72	63	5.00

ITEMS WILL BE SUPPLIED UNTESTED UNLESS REQUESTED

LARGER DIAMETERS UP TO AND INCLUDING M76 ON REQUEST

SAFE WORKING LOADS ARE SUPPLIED BY MANUFACTURING

IN CASES OF DOUBT OR IN CRITICAL APPLICATIONS A PROFESSIONAL ENGINEER SHOULD BE CONSULTED TO ASSESS THE LOAD OR TO TEST THE PRODUCT

Materials	Finishes
<i>BS970 080A27 (EN5A)</i>	<i>Self Colour</i>
<i>Hardened and Tempered</i>	<i>Galvanised</i>
<i>Stainless Steels</i>	<i>Electroplated</i>
<i>Alloy Steel B7</i>	<i>Sherardised</i>

INFORMATION AND DRAWINGS PROVIDED ARE FOR REFERENCE ONLY